

SAILING INSTRUCTIONS

1. DEFINITIONS

- 1.1 The notation **(NP)** in a rule means that a boat may not protest for breaking that rule. This changes RRS 60.1(a) and 60.2 (a).
- 1.2 The notation **(DP)** in a rule means that a boat may be given a Discretionary Penalty for breaking that rule (see RRS 64.6).

2. RULES

The race to be governed by the rules as defined in the 2021-2024 Racing Rules of Sailing (RRS), PHRF-LE Class Rules, and these sailing instructions. Each yacht must conform to the USCG requirements for their vessel.

3. NOTICES TO COMPETITORS

Notices to competitors will be posted on the official Sail Fleet notice board Online at www.NorticeOfRAce.net . An unofficial courtesy notice board may be located near the waterside windows of the Monroe Boat Club.

4. CHANGES TO SAILING INSTRUCTIONS

Any change to the sailing instructions will be posted on the official notice board not later than one hour before the affected race.

5. SIGNALS MADE ASHORE


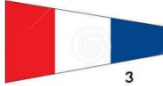


Signals made ashore will be displayed from the flagpole located near the waterside of MBC. When flag AP is displayed ashore, "1 minute" is replaced with "not less than 60 minutes" in the race signal AP.

6. SCHEDULE OF RACES

- 6.1 Saturday, June 29, 2024, ONE (1) Race will be sailed. The scheduled time for the warning signal will be at 8:55 am.
- 6.2 There will be NO competitors' meeting.

7. CLASS FLAGS AND ORDER OF STARTS

Classes will start in the following order and at these approximate starting times:

		Warning Signal: 08:55 am		
		CLASS FLAG	CLASS	APPROX STARTING TIME
		#1	JAM B	9:00 am
		#2	JAM A	9:05 am
		#3	PHRF B	9:10 am
		#4	PHRF A	9:15 am

On-water postponement: Code Flag "AP" and two sound signals. The Warning Signal will be made one minute after lowering the "AP" flag.

8. RACING AREA

The racing area will be in western Lake Erie.

9. THE START

Races will be started in accordance with RRS 26 with the warning signal given 5 minutes before the starting signal. The starting line will be between an orange flag on the R/C boat and the NCYC Center racing mark. Boats whose class flag has not been displayed shall avoid the starting area.

9. COURSES

The Race Committee Boat will post the Course Number on a White Board with Black numerals indicating the course to be sailed. Attachment A provides approximate Lat/Long for marks of the courses. Attachment B provides a general diagram of the courses including the approximate angles between legs, the order in which marks are to be passed, and the side on which each mark is to be left. Attachments are for information only and are **Not for Navigation.**

- **Course JAM #1:** Start, round "E" to Port, round Monroe Shipping Channel G1 to Starboard, round Toledo Shipping Channel R10 to Starboard, to Finish. Course Length 15.9 NM.
- **Course PHRF #1:** Start, round "E" to Port, round Monroe Shipping Channel G1 to Starboard, round Toledo Shipping Channel R10 to Starboard, round Toledo Harbor Lighthouse to Starboard, to Finish. Course Length 19.5 NM.
- **Course JAM #2:** Start, round "E" to Starboard, round West Sister Island to Port, to Finish. Course Length 27.0 NM.
- **Course PHRF #2:** Start, round "E" to Starboard, round Toledo Harbor Lighthouse to Port, round West Sister Island to Port, round Toledo Shipping Channel R2 to Port, to Finish. Course Length 30.4 NM.
- **Course JAM #3:** Start, round "E" to Port, round Toledo Shipping Channel R2 to Starboard, round West Sister Island to Starboard, round Toledo Shipping Channel R10 to Starboard, to Finish. Course Length 28.3 NM.
- **Course PHRF #3:** Start, leave "E" to Port, round Toledo Shipping Channel R2 to Starboard, round Middle Sister Island to Starboard, round West Sister Island to Starboard, round Toledo Shipping Channel R10 to Starboard, to Finish. Course Length 38.7 NM.

11. THE FINISH

The finish line will be between an orange flag on the R/C boat and the North racing mark unless shortened or abandoned (See RRS 32).

12. RECALLS

The R/C boat will fly Code Flag "X" or "First Substitute" and signal in accordance with Rule 29, and MAY attempt to notify individual yacht(s) by hail. However, failure of a yacht to hear her recall or hail shall not relieve her of her obligation to start correctly.

13. TIME LIMIT

There will be no time limit.

14. PROTESTS AND REQUESTS FOR REDRESS

Protest flags must be flown. *Hearing Request* forms (formerly "Protest Forms") must be provided on paper by the competitor and are available for download here: <https://cdn.ussailing.org/wp-content/uploads/2018/04/US-Sailing-2017-2020-Protest-Form.pdf>

Hearing Requests shall be delivered to the MBC Sail Fleet Board folder within 1.0 hour after the race committee/finish boat docks. Forms are also available from the Sail Fleet Bulletin Board at Monroe Boat Club.

The protesting yacht must notify the R/C boat at the finish line of their intent to protest and the sail number of the protested yacht. Hearings will be held as soon as possible after racing in MBC Commodore's Room. All interested parties must be present. A boat that has taken a penalty under RRS 31.2 or 44.1 shall notify the Race Committee after it has finished the race.

15. SCORING

The Low Point System of Appendix A of the RRS will apply.

16. SAFETY

Each competitor is responsible for the personal safety of him/herself, his/her crew and yacht. It shall be the sole and inescapable responsibility of the skipper and crew of the yacht to decide whether or not to start, continue, or finish a race. All yachts shall follow the U.S. Coast Guard requirements for carrying lights at night.

Retirement: A yacht that retires shall notify the Race Chair, verbally, via mobile phone (**419-356-9394, leave message or sms with yacht name and #**), or using VHF channel 71, before leaving the racing area. If that is not possible, the yacht shall notify MBC as soon as possible. The club monitors VHF channel 16. Club telephone: (734) 243-8935.

17. RADIO COMMUNICATION

(DP) Each boat shall have onboard an operating VHF radio, capable of both transmitting and receiving, and shall monitor Chs 16/71 while racing. This is the only method to immediately broadcast potentially life and/or property saving information to the entire fleet and other potential responders at once.

18. TROPHIES AND PRIZES

Winners will be announced and flags/trophies awarded following protests and scoring in the MBC Pavilion. Flags will be awarded to the top three finishers of each class (typically with a minimum of five competitors). Additionally, an Overall Perpetual Trophy is awarded to the top finisher in PHRF. Entries in the JAM and Cruising Divisions are not eligible for the Overall Perpetual Trophy.

19. CHAMPIONSHIP SERIES

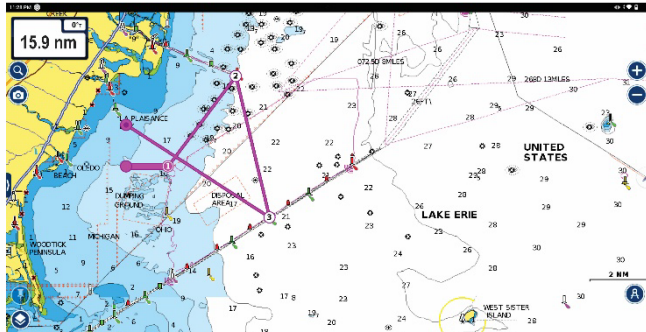
This race counts toward the AYC Championship Series and the PHRF Lake Erie Championship Series.

ATTACHMENT "A" MARK LOCATIONS (these locations are approximate and not in any order of any Course)

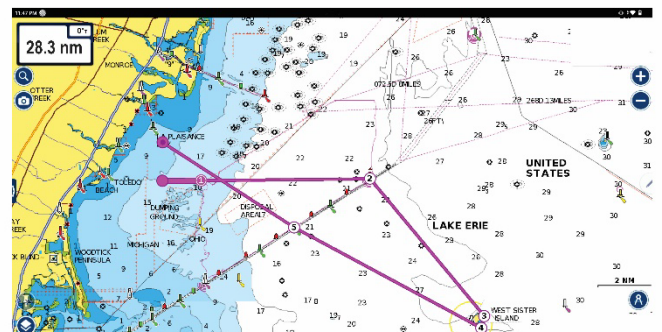
NCYC Center racing buoy 41° 49.457 N, 83° 21.842 W	NCYC East racing buoy 41° 49.457N, 83° 19.961W	Monroe Channel G-1 41° 52.517 N, 83° 16.864 W	Toledo Channel R-10 41° 47.750 N, 83° 15.354 W
Toledo Harbor Light 41° 45.711 N, 83° 19.741 W	NCYC North racing buoy 41° 50.867N, 83° 21.841W	Toledo Channel R-2 41° 49.529N, 83° 11.608W	Toledo Channel R-14 41° 46.924 N, 83° 17.115 W
West Sister Island Light 41° 44.229 N, 83° 6.626 W	Middle Sister Island Light 41° 50.998 N, 82° 59.898 W		

ATTACHMENT "B" Chartlets of the Courses. Not for Navigation.

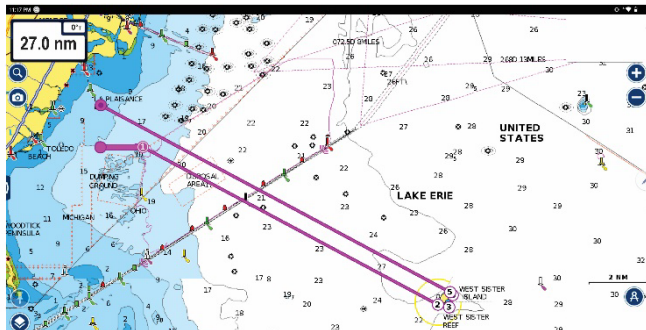
JAM COURSE #1



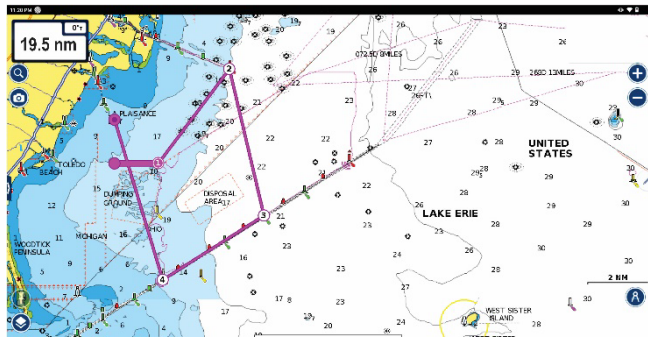
JAM COURSE #3



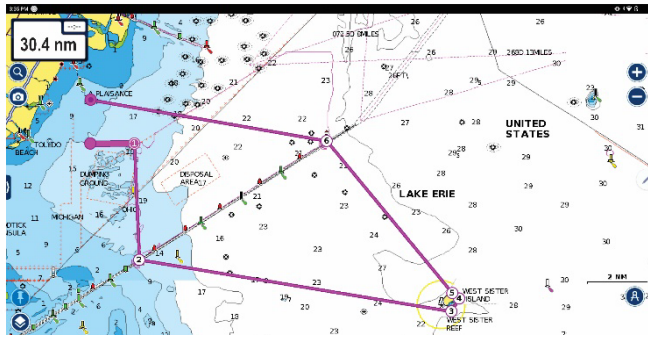
JAM COURSE #2



PHRF COURSE #1



PHRF COURSE #2



PHRF COURSE #3

